



TRAX RANGE



TRAX SINGLE

Product Code: TRX100

Width: 700mm

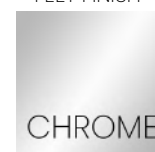
Depth: 720mm

Height: 440mm

FABRIC OPTIONS

See our standard range of fabric choices on page 5.

FEET FINISH



TRAX SINGLE WITH BACK

Product Code: TRX101

Width: 700mm

Depth: 720mm

Height: 760mm

Seat Height: 440mm

FABRIC OPTIONS

See our standard range of fabric choices on page 5.

FEET FINISH



TRAX DOUBLE

Product Code: TRX200

Width: 1400mm

Depth: 720mm

Height: 440mm

FABRIC OPTIONS

See our standard range of fabric choices on page 5.

FEET FINISH



TRAX RANGE



TRAX DOUBLE WITH BACK

Product Code: TRX202

Width: 1400mm

Depth: 720mm

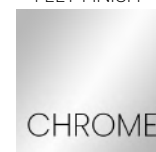
Height: 760mm

Seat Height: 440mm

FABRIC OPTIONS

See our standard range of fabric choices on page 5.

FEET FINISH



TRAX CURVE

Product Code: TRX203

Width: 1900mm

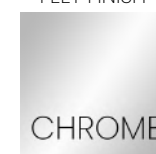
Depth: 720mm

Height: 440mm

FABRIC OPTIONS

See our standard range of fabric choices on page 5.

FEET FINISH



TRAX CURVE WITH BACK

Product Code: TRX204

Width: 1900mm

Depth: 720mm

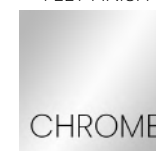
Height: 760mm

Seat Height: 440mm

FABRIC OPTIONS

See our standard range of fabric choices on page 5.

FEET FINISH



TRAX RANGE



TRAX CONNECT

Product Code: TRX400

Width: 720mm

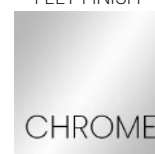
Depth: 720mm

Height: 440mm

FABRIC OPTIONS

See our standard range of fabric choices on page 5.

FEET FINISH



TRAX COFFEE TABLE

Product Code: TRX300

Width: 790mm

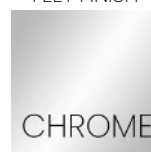
Depth: 600mm

Height: 400mm

FABRIC OPTIONS

See our standard range of fabric choices on page 5.

FEET FINISH



LAMINATE FINISHES



Additional laminate finishes available on request*

FABRIC CHOICES



This is just a selection of fabric options that we offer. If you require anything that is not listed below, please contact our sales team.

BAND A	BAND B	BAND C	BAND D	BAND E	BAND F	BAND F	BAND H
CAMIRA	CAMIRA	CAMIRA	CAMIRA	CAMIRA	CAMIRA	CAMIRA	CAMIRA
Advantage	Canopy	Halcyon Linden	24/7 +	Aquarius	Century	Blazer Quilt Channel	Corrosion
Era	Chateau	Honeycomb	24/7 Flax	Blazer	Code	Blazer Quilt Hourglass	Synergy Quilt
Gravity	Figaro	Main Line Flax	Halcyon Aspen	Hebden	Craggan	Nettle Collection	Chevron
Pheonix	Main Line Plus	Marvel	Halcyon Blossom	Synergy Quilt	Craggan Flax		
Rivet	Manhattan	Patina	Halcyon Cedar	Hourglass	Individuo	GABRIEL	GABRIEL
	Sprint		Halcyon Poplar	Zig Zag	Stripes	Interglobe Wool 2	Breeze
GABRIEL	Urban	GABRIEL	Hemp	Main Line Flax		Luna Fleur	Criss Cross
Dragon	Vita	Bond	Intervene Plain	Stripe	GABRIEL	Omega	Gaja +
	X2	Event	Intervene Texture	Oxygen	Breeze Fusion	Rhythm	
	Xtreme	Fame	Landscape Balance	Silk	Flex	Runner	
	Xtreme CS	Gaja Classic	Landscape Contact	Touch FR	Harlequin		
		Go Check	Landscape Synergy	Track	Infinity	AGUA	
	GABRIEL	Go Couture	Synergy	Trail	Moment	Derrytex	
	Elevation	Note			Web	Mistique	
	Go Uni	Step Melange	GABRIEL	GABRIEL			
	Repetto	String	Capture	Atlantic			
	Step	Tempt	Crisp	Felicity			
			Europost 2	Luna			
	SUNBURY	AGUA	Fame Hybrid	Mood			
	Islington	Aries	Fighter		AGUA		
	Kariba	Juno	Medley		Alberta		
	Sauvage	Libra			Aura UV Solids		
		Linetta	AGUA		Carmina		
	CHIEFTAIN	Luna Scorpio	Cashmir		Classic		
	Just Colour	Paint Pot	Evoke		Furnissoft PU		
	Just Patterns		Fushion		Oregon		
		SUNBURY	Nova		Stirata Illusions		
		Chaps	Ocular		Stretch		
		Eames	Parody		Snowdon		
		Farringdon	Sark		The 7 Collection		
		Garda	Stirata				
		Islington Metallic	Taurus				
		Lingdale	Vistas				
		Lugano					
		Sunhide	SUNBURY				
		Tahoe	Barton				
		Toba	Darwin				
			Fleming				
			Jemison				
			Lana				
			Lister				
			Mardale				
			Nubuck				

TERMS & CONDITIONS



VAT

All prices are subject to VAT at the prevailing rate.

ORDERS

All orders must be placed in writing with your colour choices clearly stated for fabrics, table top and frame finishes etc. Verbal orders will not be accepted. Manufacture of goods will only commence once we have received all required information.

ACKNOWLEDGEMENTS

We will issue an order acknowledgement for all written purchase orders that we receive. Although we will endeavour to interpret your instructions correctly, occasionally errors may occur. Ultimately, it is your responsibility to check the contents of the acknowledgement thoroughly - failure to do so could result in incorrect goods being supplied, therefore Stic Design will not be held responsible for any errors which occur as a result of this.

COLOURS

We will not be held responsible for rectification / replacements for any rejected items where customers have not requested colour swatches prior to ordering to confirm their exact colour match, nor where customers have not made clear their colour requirements.

CARRIAGE

All deliveries are made to tailgate only. It is the customers responsibility to offload the vehicle on arrival. We can arrange for your furniture to be installed at an additional cost.

Carriage charges apply to all orders to a single destination and where deliveries are made within our usual delivery lead times. Where a dedicated delivery day or time is required this may incur an additional cost.

If special delivery arrangements are to be adhered to, these must be stated at the time of ordering and accepted by us in writing.

Please check dimensions of your furniture prior to ordering as returns for items that do not fit into your premises will not be accepted.

SHORTAGES & DAMAGES

Notifications of shortages or damages must be made in writing within 2 working days of receipt of delivery to the designated delivery address on your order. Reports of damage etc will not be accepted for goods held in stock and delivered at a later date. We cannot be held responsible for damages or shortages once the goods have been transhipped from the original delivery address. It is the purchaser's responsibility to unwrap and inspect all furniture within PRIOR to transhipping the goods.

Where goods are collected from our premises, it is the customer's responsibility to ensure that an appropriate vehicle is used and the responsibility for loading the goods correctly is with the carrier and not Stic Design's staff.

PAYMENT TERMS

We welcome new accounts, however:

- 1) First orders are processed on a pro forma basis only.
- 2) Credit accounts are opened at our discretion. Existing account holders terms are strictly 30 days from the date of invoice.
- 3) We reserve the right to request payment of the total order value for non standard products prior to manufacture, regardless of order / credit status.

DELIVERY DATE

Whilst we endeavour to meet our customers delivery date, we cannot be held responsible for delays caused by factors outside of our control. We are therefore not responsible for loss of trade or subsequent loss as a result of a delivery delay.

SPECIFICATIONS

We reserve the right to alter design and specifications without prior notice, however, if orders are to match those existing products previously supplied by us, please notify us at time of ordering and we will endeavour to match products where possible. Please note all dimensions are approximate and in millimetres.

OWNERSHIP OF GOODS

The ownership of goods shall remain with Stic Design until such time that payment has been received and cleared in full.

MADE TO ORDER

All of our products are made to order.

CANCELLATIONS

As the our entire range is made to order, we cannot accept cancellation or amendments except with our written consent and on our terms, which will indemnify Stic Design against loss. Goods that are acceptable for return or cancellation will automatically attract a minimum 25% re-stocking charge, plus an appropriate collection charge, where applicable.

IMAGES

Stic Design retains all rights on any image depicted in their literature and website. Customers are free to use these images for the sole purpose of advertising Stic Design's product range only. Any unauthorised use could result in prosecution.

WARRANTY

As standard we offer a three year guarantee for every product. The warranty excludes fair wear & tear, and neglect or misuse of our furniture while in situ. In the rare event that you should be unsatisfied with the performance of any product that you have purchased from us, please report your concerns to our sales team in writing. We reserve the right to inspect the product, request photographic evidence or remove the item for external testing prior to making any decisions concerning offers of a possible exchange or repair of such items.

IT IS YOUR RESPONSIBILITY TO ENSURE YOUR CUSTOMER IS MADE AWARE OF ANY TERMS AND CONDITIONS THAT MAY BE APPLICABLE TO THEM (IN PARTICULAR OUR DELIVERY AND CARRIAGE TERMS).



Unit 4, Lodge Forge Trading Estate
Cradley Road
Cradley Heath
West Midlands
B64 7RW

01384 210569

sales@sticdesign.co.uk

